



National Marine Manufacturers Association

nmma.org

# ECONOMIC SIGNIFICANCE OF RECREATIONAL BOATING IN GEORGIA

## CONGRESSIONAL DISTRICT 1

Number of Recreational Boats*	37,928
Recreational Boating Industry Businesses	146
Total Jobs	2,695
Annual Recreational Boating-Related Spending	\$145.8 MILLION

TOTAL ANNUAL  
ECONOMIC IMPACT  
OF RECREATIONAL BOATING:

**\$342.4** MILLION

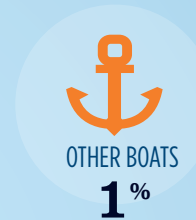
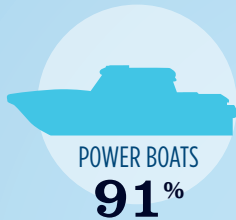
## RECREATIONAL BOATS IN GA-1

TOTAL BOATS\* ▶ 37,928

REGISTERED BOATS 37,928

Power boats	34,612
PWCs	2,475
Sailboats	586
Other Boats	255

HOUSEHOLDS PER BOAT 7.0

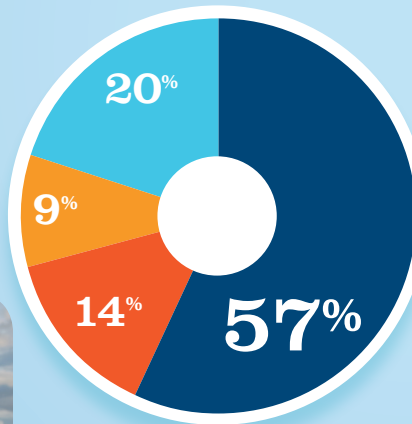


\* Total boats are registered boats as reported by states to the USCG.

## RECREATIONAL BOATING CREATES JOBS IN GA-1

TOTAL BOATING JOBS ▶ 1,066

Boat Building	210
Motor / Engine Mfr.	-
Accessory / Supplies Mfr.	101
Dealers / Wholesalers	144
Boat Services	611



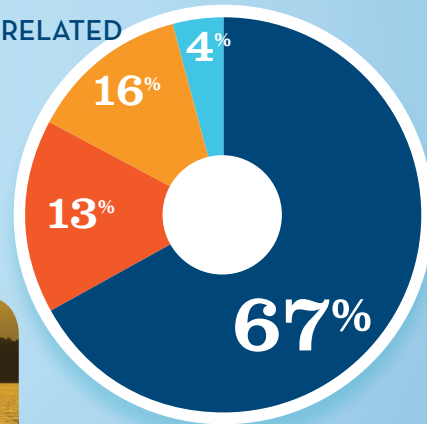
BOAT BUILDING 20%  
MOTOR/ENG. MFR. 9%  
ACC./SUPPLIES MFR. 14%  
DLRS/WHOLESALERS 0%  
BOAT SERVICES 57%



## RECREATIONAL BOATING-RELATED BUSINESSES IN GA-1

TOTAL BUSINESSES ▶ 146

Boat Building	6
Motor / Engine Mfr.	-
Accessory / Supplies Mfr.	19
Dealers / Wholesalers	23
Boat Services	98



BOAT BUILDING 4%  
MOTOR/ENG. MFR. 16%  
ACC./SUPPLIES MFR. 13%  
DLRS/WHOLESALERS 0%  
BOAT SERVICES 67%

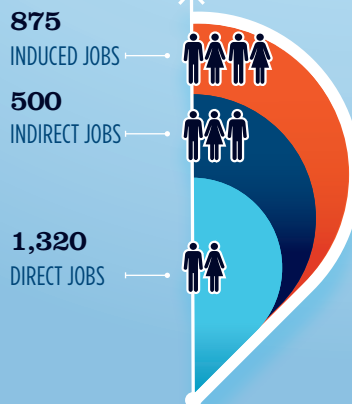


## ESTIMATED JOBS IMPACT OF RECREATIONAL BOATING-RELATED SPENDING IN GA-1

EST. TOTAL JOBS ▶ 2,695

EST. TOTAL LABOR INCOME ▶ \$111.2 MILLIONS

Est. Direct Income	\$44.9
Est. Indirect Income	\$28.0
Est. Induced Income	\$38.3

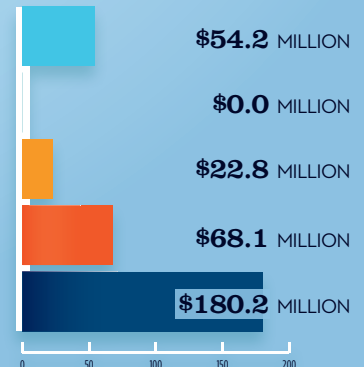


## RECREATIONAL BOATING INDUSTRY SALES IN GA-1

Boat Building	\$54.2 MILLION
Motor / Engine Mfr.	\$0.0 MILLION
Accessory / Supplies Mfr.	\$22.8 MILLION
TOTAL MFR. SALES	\$77.0 MILLION

Dealers / Wholesalers	\$68.1 MILLION
Boat Services	\$180.2 MILLION
TOTAL RETAIL & SERVICES SALES	\$248.3 MILLION

BOAT BUILDING \$54.2 MILLION  
MOTOR/ENG. MFR. \$0.0 MILLION  
ACC./SUPPLIES MFR. \$22.8 MILLION  
DLRS/WHOLESALERS \$68.1 MILLION  
BOAT SERVICES \$180.2 MILLION



Source: NMMA's Center of Knowledge; Recreational Marine Research Center at Michigan State University